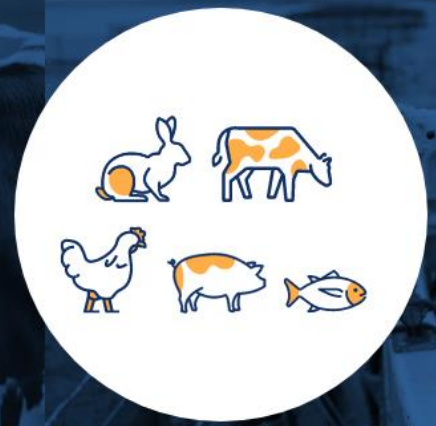


# Responsible soy sourcing (deforestation)



*Last update: 2 June 2023*

- **Type of challenge:** Environment.
- **Challenges:** Climate change (deforestation, GHG emissions); biodiversity.
- **Action:** Sourcing soybean products from non-deforested areas.
- **Animal categories:** All farmed species, in specific poultry.
- **Technique:** Sourcing responsibly produced soybean products (meal, oil, SPC, etc.) from certification schemes/programmes that meet the criteria in the FEFAC Soy Sourcing Guidelines.
- **Mode of implementation:** The soybean products produced through these certification schemes/programmes provide sustainability guarantees for the soy cultivation, also in terms of not being cultivated in recently deforested areas.
- **Mode of action:** The certification schemes/programmes are benchmarked for compliance against the FEFAC Soy Sourcing Guidelines by the International Trade Center (operating under WTO and UN mandate to facilitate sustainable trade).
- **Requirements/limitations:** Certified soy is available under different chain of custody models, with a variety in the level of physical connection to the soy delivered at feed mill level; the use of certification is not expected to deliver 'de facto' compliance with the incoming European Union Deforestation Regulation.
- **Economic consequences:** A premium is required for certified soy, ranging between 4 and 30 dollars per ton depending on choice of chain of custody model.
- **Other considerations:** The FEFAC Soy Sourcing Guidelines include additional criteria in relation to environment stewardship, agricultural practices and responsible working conditions.
- **References:**
  - FEFAC soy sourcing guidelines 2021. <https://fefac.eu/wp-content/uploads/2021/02/FEFAC-Soy-Sourcing-Guidelines-2021-1.pdf>
  - European Feed Manufacturers' Federation (FEFAC) Responsible Soy Benchmarking Tool – ITC Sustainability Gateway. <https://sustainabilitygateway.org/european-feed-manufacturers-federation-fefac-soy-benchmarking-tool/>

Charter Ambition: 3